



SMART. EASY. COOL.

HC°
HYDROCHILL™

— HOME —
EVAPORATIVE COOLING SYSTEM

PROUDLY BROUGHT TO YOU BY APT ASIA PACIFIC
IN CONJUNCTION WITH SOUTHWEST GREENS

We're proud to deliver turf that saves families and businesses time and money - allowing you to focus on the things that matter most. With our advanced HydroChill Home cooling technology we've taken on summer-time heat in a smart and easy way. A simple addition to the turf's infill provides an average cooling range of 16-28 degrees Celsius and works naturally when hydrated by irrigation, rainfall and dew! Feet and paws appreciate the difference APT and Southwest Greens delivers.





2013

was the hottest year on record
in Australia.

7^{of} 10

hottest summers on record
have occurred since 2000

2013 and 2014 were the

1st & 3RD

hottest summers on record
in Australia

More than 90% of Australians
experience temperatures of

37° Celsius

during the summer months

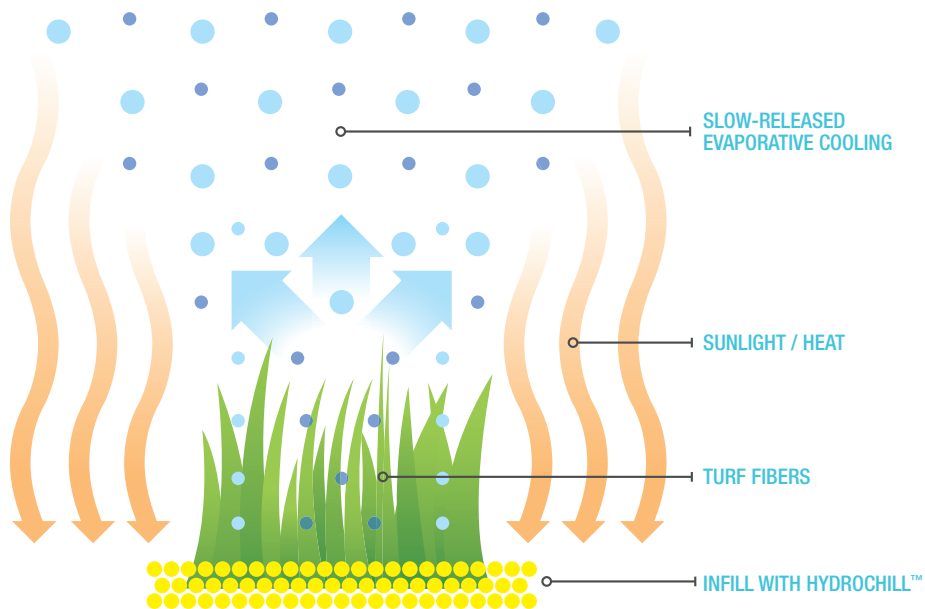
Of the energy absorbed
into turf from solar radiation,

90%

is released as heat while
only 10% is conducted into
the ground

So, how does
HydroChill™ Home work?

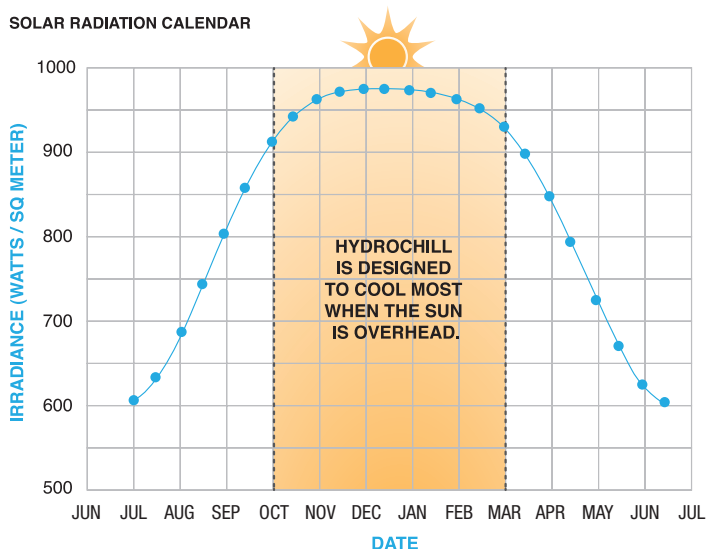
It cools your lawn like nature
cools your body.



EVAPORATIVE COOLING TECHNOLOGY

Perspiration is a natural means of thermoregulation called evaporative cooling. Evaporation of moisture from the skin's surface has a cooling effect. Similarly, HydroChill™ has been shown to cool synthetic turf surfaces by working on the same principle. As the turf surface is heated by solar radiation, moisture stored in the HydroChill turf is released. Evaporating moisture removes heat, leaving a cooler more comfortable surface for the users.

SOLAR RADIATION CALENDAR



WHEN HYDROCHILL IS MOST EFFECTIVE

Ambient temperature outside doesn't necessarily dictate surface temperature. The solar radiation time period, sun's angle, cloud cover, wind and other elements all contribute to the temperature of the surface.

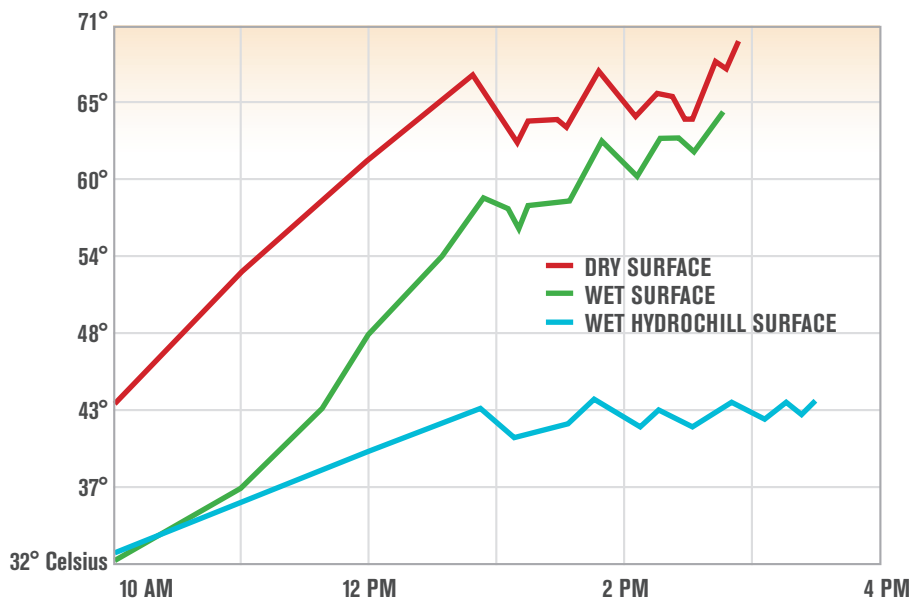
HydroChill provides maximum benefit when the sun is nearest the Earth, as shown in the solar radiation calendar. During the summer months in Australia, the sun is positioned overhead causing surfaces to absorb more energy resulting in hotter temperatures. The rotation of the Earth is also responsible for hourly variations in sunlight thus making HydroChill most effective during the hotter part of a clear day when most needed.

- > HydroChill utilizes moisture to provide a cooling effect. Rainfall, dew and irrigation can help keep your lawn cool for days, depending on local conditions
- > HydroChill can be incorporated into all of APT's infilled lawn systems
- > HydroChill will not affect the durability or warranty of APT's products
- > HydroChill is UV-resistant and should be re-treated every two years for maximum effectiveness

HydroChill™ patented technology has been developed through years of turf system research. It has been vetted with laboratory testing and, more importantly, outdoor lawn testing.

Bottom line—the HydroChill system has been shown to work in actual outdoor settings by providing a cooler lawn.

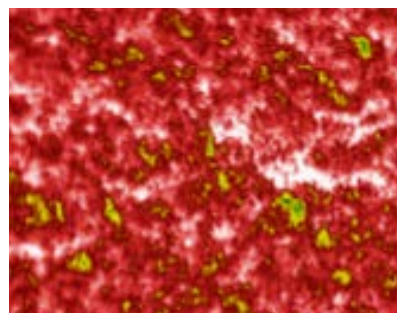
THERMOCOUPLE TEST READINGS
FROM OUTDOOR SYNTHETIC TURF LAWNS



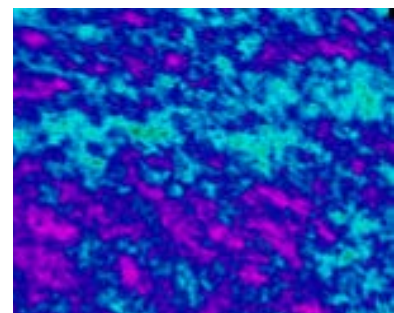
A standard lawn with a wet surface will cause some cooling, but temperatures can quickly rise and may exceed uncomfortable levels of heat. A HydroChill lawn has been shown to create a substantial temperature differential in real-world applications. Based on actual lab and outdoor lawn thermocouple testing, HydroChill has achieved 16°-28° Celsius lower surface temperatures compared to a standard synthetic turf system.

FLIR (FORWARD LOOKING INFRARED) READING:
STANDARD SYNTHETIC SURFACE VS. HYDROCHILL

Further testing was performed by a FLIR-Certified Thermographer using the most advanced camera imagery and technology. The FLIR camera was calibrated for emissivities of various materials used in the turf system so additional accurate temperature measurements could be obtained.



DRY SURFACE



HYDROCHILL

How is HydroChill™ Home applied?

Hydrochill is a pre-coated sand infill that can be added to new or existing synthetic lawns. HydroChill naturally holds moisture and can be activated through irrigation systems or a simple water hose. Either way, the effectiveness can last for days as the moisture is released. HydroChill is non-toxic and does not have negative environmental effects. Now you can control surface temperatures for your family and pets.





PERFORMANCE ENHANCING SURFACE TECHNOLOGY

AUSTRALIA 03 8792 8000

Factory 3, Dunlopillo Dr. Dandenong South,
VIC 3175 Australia

enquiry@advpolytech.com.au

www.advpolytech.com.au

@APTWorldwide



SOUTHWEST GREENS®
GOLF & GRASS

© 2015 Southwest Greens. A Division of Shaw,
A Berkshire Hathaway Company.